

SUBJECT:

MODEL SERIES:  
VGL  
VGR

VIRAGE

PHILIPS  
Day-Brite

# INSTRUCTION SHEET

**WARNING:** ELECTRICAL SHOCK POTENTIAL !! DO NOT ATTEMPT TO INSTALL, MAINTAIN OR RELAMP WITHOUT DIS-CONNECTING ALL POWER. FAILURE TO DISCONNECT POWER CAN RESULT IN ELECTROCUTION, SHOCK OR SEVERE BURNS.

**CAUTION:** This fixture is designed for permanent installation in ordinary (Non-Hazardous) locations in accordance with the National Electrical Code and all applicable local codes. Do not use in areas of limited ventilation or in high ambient enclosures. The lamp and fixture operate at high temperatures, contact with combustible materials can cause fire and personal contact can cause severe burns.

## LIGHT ENGINE INSTALLATION - VGL

K.O.s PROVIDED FOR CONTINUOUS ROW MOUNTING

GRID CLIP INSTALLED

GRID "T"  
LAY-IN CEILING SYSTEM  
(BY OTHERS)

WIRE HANGING TAB(4)

GRID CLIP & SCREW PROVIDED (4)

### 1 GRID CLIPS

- MOUNT THE LIGHT ENGINE IN CEILING.
- ATTACH GRID CLIPS TO EACH SIDE AT THE END OF THE LIGHT ENGINE WITH SCREWS PROVIDED AS SHOWN ABOVE. GRID CLIPS HOOK OVER TOP OF GRID "T".

### 2 ACCESS PLATE

- REMOVE ACCESS PLATE FROM OUTSIDE HOUSING AND ATTACH SUPPLY LEADS TO LIGHT ENGINE SUPPLY LEADS THROUGH OPEN HOLE.
- ATTACH CONDUIT TO ACCESS PLATE.
- ROTATE ACCESS PLATE UNTIL SLOTS IN ACCESS PLATE ARE OVERLAPPING HOLE
- ROTATE ACCESS PLATE DOWN AND SLIDE IN DIRECTION SHOWN IN STEP 2 UNTIL ACCESS PLATE IS FIRMLY ATTACHED TO LIGHT ENGINE'S HOUSING
- INSTALL LAMP.

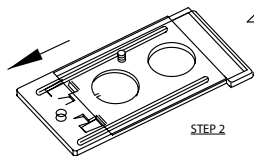
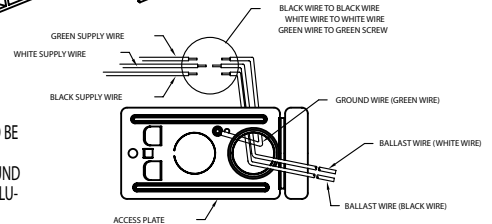
CAT. NO. AP-1

GROUNDING SCREW PROVIDED

GROUNDING CONDUCTOR (IF INSULATED) TO BE STRIPPED MIN. 1" - INSERT END OF WIRE INTO SMALL HOLE - WRAP WIRE UNDER AND AROUND HEAD OF SCREW COUNTERCLOCKWISE (AS ILLUSTRATED) TIGHTEN SCREW.

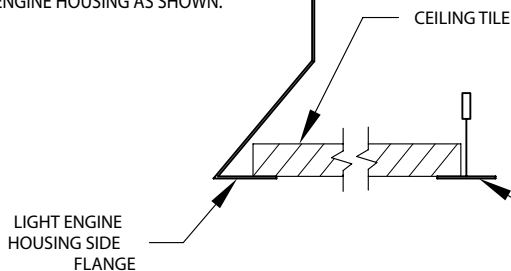
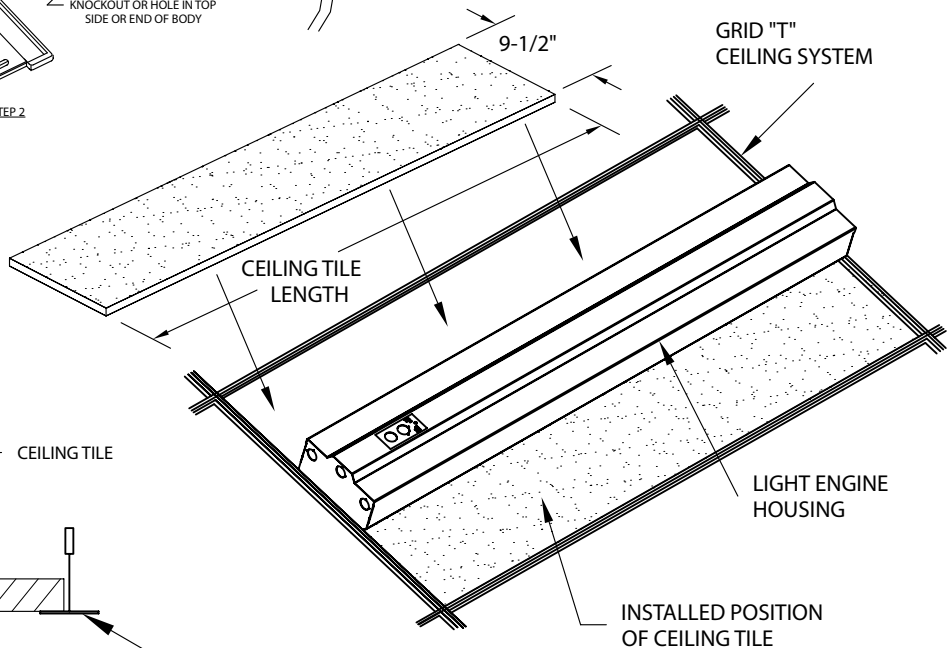
STEP 1

KNOCKOUT OR HOLE IN TOP SIDE OR END OF BODY



### 3 CEILING TILE TEMPLATE

- IN ORDER TO CENTER THE LIGHT ENGINE IN A 2ft BY 4FT GRID OPENING, SIDE CEILING TILES MUST BE CUT TO FIT IN ON EACH SIDE OF THE LIGHT ENGINE.
- AFTER CUTTING CEILING TILE TO CORRECT SIZE, INSTALL TILE INTO GRID "T" CEILING SYSTEM AND FLANGE OF THE LIGHT ENGINE HOUSING AS SHOWN.



FEB 2009 FRONT

7 21471-101

SUBJECT:

MODEL SERIES: -  
VGL  
VGR

VIRAGE

PHILIPS  
Day-Brite

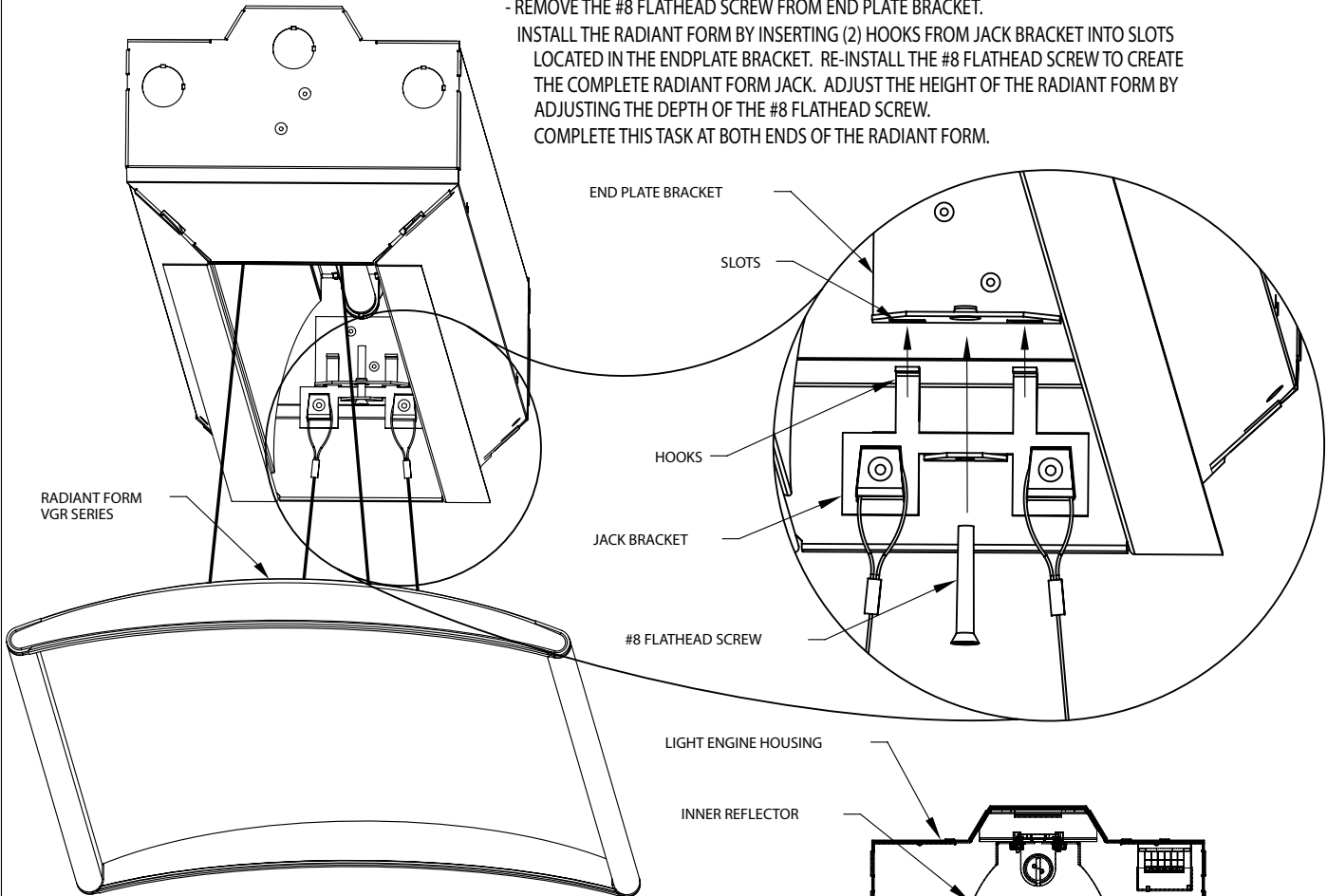
# INSTRUCTION SHEET

**CAUTION: THE INSTALLATION AND SERVICING OF THIS PRODUCT SHOULD BE PERFORMED BY A QUALIFIED ELECTRICIAN OR SERVICE PERSONNEL**

## RADIANT FORM INSTALLATION - VGR

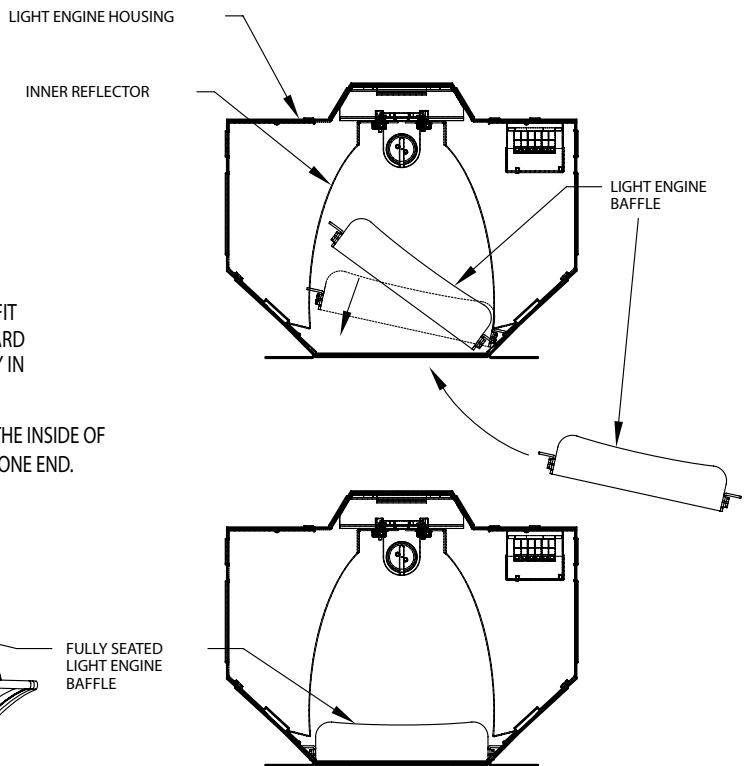
### 4 RADIANT FORM

- REMOVE THE #8 FLATHEAD SCREW FROM END PLATE BRACKET.
- INSTALL THE RADIANT FORM BY INSERTING (2) HOOKS FROM JACK BRACKET INTO SLOTS LOCATED IN THE ENDPLATE BRACKET. RE-INSTALL THE #8 FLATHEAD SCREW TO CREATE THE COMPLETE RADIANT FORM JACK. ADJUST THE HEIGHT OF THE RADIANT FORM BY ADJUSTING THE DEPTH OF THE #8 FLATHEAD SCREW.
- COMPLETE THIS TASK AT BOTH ENDS OF THE RADIANT FORM.



### 5 LIGHT ENGINE BAFFLE

- INSTALL LIGHT ENGINE BAFFLE BY INSERTING THE BAFFLE TILTED AS SHOWN. PUSH THE BAFFLE INSIDE THE LIGHT ENGINE HOUSING ALLOWING ONE SIDE TO FIT UNDER THE INNER REFLECTOR. PULL THE OTHER SIDE OF THE BAFFLE DOWNWARD UNTIL IT SNAPS PAST THE OTHER INNER REFLECTOR. SEAT THE REFLECTOR FULLY IN THE BOTTOM OPENING OF THE LIGHT ENGINE HOUSING.
- REMOVE THE LIGHT ENGINE BAFFLE BY PRESSING THE INNER REFLECTOR BACK TO THE INSIDE OF THE LIGHT ENGINE HOUSING AND PUSH THE REFLECTOR UPWARD STARTING AT ONE END.



BACK  
FEB 2009

7 21471-101