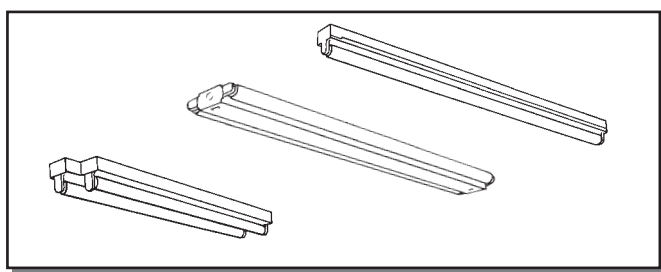


T5 MICRO STRIPS



2', 3', 4', 5', or 8'
1 or 2 Lamp
T5 or T5HO

CONSTRUCTION/FINISH

- Available in standard configuration, side mount, angle mount and staggered models for application flexibility.
- Suitable for individual or row applications.
- Suitable for surface or suspension mounting.
- High reflectance baked white enamel finish.
- Standard and side/angle mount wireway covers are secured with two (2) #8 x 5/16" screws.
- Staggered strip wireway covers are secured with quarter turn fasteners.
- End plates incorporate 7/8" K.O. for continuous row mounting.
- Aligner clips for row mounting are included with staggered strip models.
- Heavy duty channel of code gauge die formed steel.
- See page 1119.3-S for strip reflectors.

ELECTRICAL

- UL listed for direct mounting on low density ceilings and damp locations.
- Class P, HPF ballasts comply with © Federal Ballast Law (Public Law 100-357,1988).
- Minimum starting temperature is 0°F.
- Green grounding screw installed in channel.
- Lampholders may be individually replaced or rewired.

ACCESSORIES (order separately)

- **FKR-126** chain hanger set
- **CS-400** rigid stem canopy
- **CS-500** swivel stem canopy
- **CEN-600** swivel canopy with leveler
- **CS** series stems
- **CM1G** and **CM2G** series wireguards for 2', 3', 4', 5' lengths for standard "M" series strips

CATALOG NUMBER

[]	[]	[]	-	[]	-	[]
FAMILY		LAMP TYPE WATTAGE		OPTIONS		
M – Micro Strip		14 – 14wT5 (22")		CM – Canadian Market		
TM – Tandem Micro Strip		24HO – 24wT5HO (22")		See Section 1600-OA for Option Information.		
MSS – Micro Staggered Strip		21 – 21wT5 (34")		See Page 950.2-SS for Accessories and Mounting Hardware.		
TMSS – Tandem Micro Staggered Strip		39HO – 39wT5HO (34")		See Page 1119.3-S for reflector accessories.		
MNS – Micro Side Mount Strip		28 – 28wT5 (46")				
TMNS – Tandem Micro Side Mount Strip		54HO – 54wT5HO (46")				
MNA – Micro Side/Angle Mount Strip		35 – 35wT5 (58")				
TMNA – Tandem Micro Side/Angle Mount Strip		80HO – 49wT5HO (58")				
	NO. OF LAMPS PER CROSS SECTION	VOLTAGE				
	(not included)	120				
	1	277				
	2	UNV - Universal voltage,				
	3	120-277 volt				
	See chart for availability					

NOTES:

- With generic Electronic Ballasts (Brand selected by Day-Brite)
Suffix Catalog # with- **Ballast Quantity** - / - **EB** Lamps Per Ballast.
- Example: -1/1-EB** = One 1 Lamp Electronic Ballast.
- Example: -1/2-EB** = One 2 Lamp Electronic Ballast.
- Some models not available with Electronic Ballasts.

T5 STRIP—PRODUCT AVAILABILITY

Nominal Length (Ft.)	Family	Lamps/ X Sect.	Lamps/ Fixture	Lamp Type
2	M	1	1	14, 24HO
3	M	1	1	21, 39HO
4	M	1	1	28, 54HO
5	M	1	1	35, 80HO
8	TM	1	2	28, 54HO
2	M	2	2	14, 24HO
3	M	2	2	21, 39HO
4	M	2	2	28, 54HO
5	M	2	2	35, 80HO
8	TM	2	4	28, 54HO
2	MSS	1	1	14, 24HO
3	MSS	1	1	21, 39HO
4	MSS	1	1	28, 54HO
5	MSS	1	1	35, 80HO
8	TMSS	1	2	28, 54HO
2	MSS	2	2	14, 24HO
3	MSS	2	2	21, 39HO
4	MSS	2	2	28, 54HO
5	MSS	2	2	39, 80HO
8	TMSS	2	4	28, 54HO
2	MNS	1	1	14, 24HO
3	MNS	1	1	21, 39HO
4	MNS	1	1	28, 54HO
5	MNS	1	1	35, 80HO
8	TMNS	1	2	28, 54HO
2	MNS	2	2	14, 24HO
3	MNS	2	2	21, 39HO
4	MNS	2	2	28, 54HO
5	MNS	2	2	35, 80HO
8	TMNS	2	4	28, 54HO
2	MNA	2	2	14, 24HO
3	MNA	2	2	21, 39HO
4	MNA	2	2	28, 54HO
5	MNA	2	2	35, 80HO
8	TMNA	2	4	28, 54HO
2	MNA	3	3	14, 24HO
3	MNA	3	3	21, 39HO
4	MNA	3	3	28, 54HO
5	MNA	3	3	35, 80HO
8	TMNA	3	6	28, 54HO

JOB INFORMATION

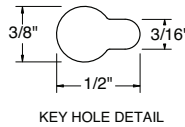
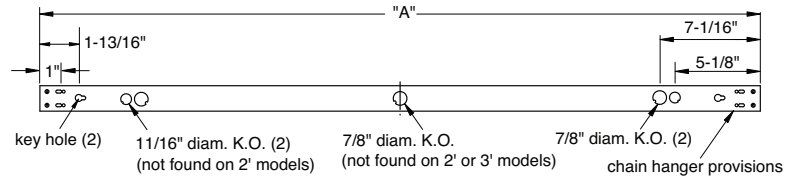
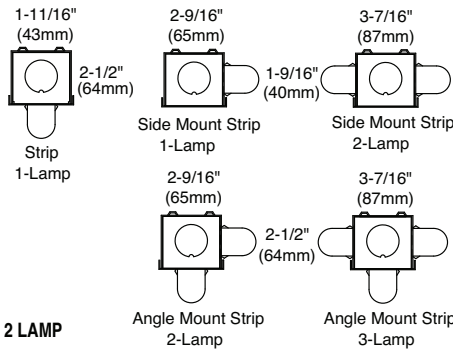
1108.1-S

PHILIPS
Day-Brite

T5 MICRO STRIPS

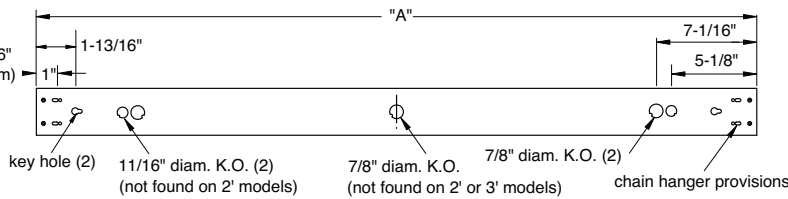
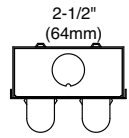
DIMENSIONS

1 LAMP/SIDE MOUNT/SIDE-ANGLE



Nominal length	DIM "A"
2'	22-3/8" (568mm)
3'	34-3/16" (868mm)
4'	46" (1168mm)
5'	57-13/16" (1468mm)
8'	92" (2337mm)

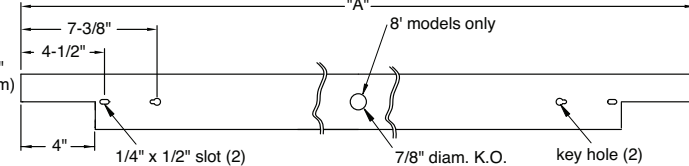
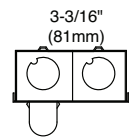
2 LAMP



Nominal length	DIM "A"
2'	22-1/2" (572mm)
3'	34-5/16" (872mm)
4'	46-1/8" (1172mm)
5'	57-15/16" (1472mm)
8'	92-1/8" (2340mm)

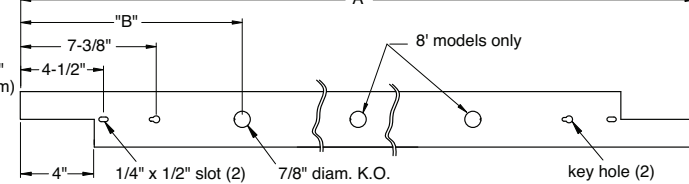
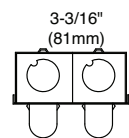
STAGGERED

1 LAMP



Nominal length	DIM "A"
2'	22-1/2" (572mm)
3'	34-5/16" (872mm)
4'	46-1/8" (1172mm)
5'	57-15/16" (1472mm)
8'	92-1/8" (2340mm)

2 LAMP



Nominal length	DIM "A"	DIM "B"
2'	26-7/16" (672mm)	5-5/16" (135mm)
3'	38-1/4" (972mm)	12-3/16" (310mm)
4'	50-1/16" (1272mm)	24" (610mm)
5'	61-7/8" (1572mm)	29-13/16" (757mm)
8'	96-1/16" (2440mm)	12" (305mm)

PHOTOMETRIC DATA

CATALOG # M254HO-1/2-EB
TEST # 23442 S/MH=1.5

LAMPS = F54T5HO
BALLAST = ELECTRONIC

INPUT WATTS = 123
BALLAST FACTOR = 1.00

LER = FS-73

COMPARATIVE YEARLY LIGHTING ENERGY COST PER 1000 LUMENS = \$3.29 BASED ON 3000 HRS. AND \$.08 PER KWH.

FIXTURE EFFICIENCY = 102.1%*

CANDLEPOWER			
Angle	End	45	Cross
0	1877	1877	1877
5	1875	1871	1866
15	1807	1849	1879
25	1681	1794	1886
35	1494	1711	1883
45	1256	1611	1868
55	974	1489	1806
65	665	1332	1621
75	345	1048	1303
85	78	675	908
95	3	444	695
105	4	280	512
115	4	128	317
125	3	20	137
135	5	4	18
145	7	6	5
155	8	7	7
165	10	9	9
175	12	10	11

MAINTAINED ILLUMINATION TABLE- Square Feet/Fixture*

- 80-50-20 Reflectances (Ceiling-Wall-Floor)
- LLF = 0.88 4400 Lumens/Lamp Clean
- Room width divided by room height = 5 or more, 2 or 1

Fixture Size & # of Lamps	Room Width Room Height =	Approx. Area (sq. ft.) per Fixture				
		10 ft-c	30 ft-c	50 ft-c	70 ft-c	100 ft-c
4' 2-Lamps	5	-	-	-	110	77
	2	-	-	98	70	49
	1	-	116	70	50	35

*Observe Fixture S/MH Requirements for Specific Applications

AVERAGE LUMINANCE CD/SQ.M WITH 4400 LUMEN LAMPS

ANGLE	END	45°	CROSS
45	20394	26158	30331
55	19497	29806	36151
65	18066	36187	44039
75	15305	46490	57803
85	10275	88921	119616

LLF = .88 LLF = LIGHT LOSS FACTOR LLF = LDD X LLD X B.F. LDD = VERY CLEAN 0.94 CLEAN 0.90
LLD = 0.94 @ 40% RATED LAMP LIFE B.F. = 1.00 ELECTRONIC BALLAST & F54T5HO LAMP (RELAMP AT 70% LAMP LIFE)

COEFFICIENT OF UTILIZATION

pfc pcc pw	20			70			50		
	70	50	30	70	50	30	50	30	30
RCR	118	118	118	114	114	114	108	108	108
1	105	98	93	101	94	90	89	84	84
2	93	83	75	90	81	72	75	68	68
3	84	71	63	81	69	60	65	57	57
4	77	63	53	73	60	52	56	48	48
5	69	56	46	67	54	45	51	41	41
6	65	50	40	61	47	39	45	36	36
7	59	45	34	56	42	34	40	33	33
8	55	40	30	53	40	30	36	28	28
9	52	36	28	50	35	28	34	27	27
10	47	34	26	46	33	25	30	23	23

LIGHT DISTRIBUTION

DEGREES	LUMENS	% LAMP	% FIXTURE
0-30	1530	17.4	17.0
0-40	2599	29.5	28.9
0-60	5124	58.2	57.1
0-90	8061	91.6	89.7
90-180	921	10.5	10.3
0-180	8981	102.1	100.0

For additional Photometric results ask for the following test numbers:

Catalog #	Test #	Catalog #	Test #
M128-1/1-EB	23447	M128-1/1-EB w/ M1SR-4	23448
M228-1/2-EB	23443	M154HO-1/1-EB w/M1SR-4	23445
M154HO-1/1-EB	23446	M228-1/2-EB w/M2SR-4	23444
		M254HO-1/2-EB w/M2SR-4	23441

*Luminaire efficiency is determined by thermal effects as well as optical design. In some applications, lamp lumen output is greater when installed in the luminaire than in 25°C open air due to the higher operating temperature of the lamp. Because photometric tests determine efficiency by comparing luminaire output to open air lamp output, this can result in an efficiency value greater than 100%.

1108.1-S

DAY-BRITE LIGHTING • www.daybritelighting.com
776 South Green Street • Tupelo, Mississippi 38804 • PH: (662) 842-7212 • FAX: (662) 841-5501
CANADIAN DIVISION
189 Bullock Drive • Markham, Ontario L3P 1W4 • PH: (905) 294-9570 • FAX: (905) 294-9811
©MARCH 2010 DAY-BRITE LIGHTING DAY-BRITE RESERVES THE RIGHT TO MAKE CHANGES WITHOUT NOTICE.

PHILIPS
Day-Brite